

SYMBOL OF QUALITY

Pioneers In Solderless Terminals,
Crimping Tools & Cable Glands

NATIONAL PRICE LIST
(25th October 2021)



HOUSE OF DESIGNERS & MAKERS OF TERMINALS, TOOLS & CABLE GLANDS

COPPER RING, PIN, FORK, TYPE SERIES



PIN TERMINAL NON-INSULATED

mm ²	CAT. NO.	PRICE EACH (Rs./Paise)	mm ²	CAT. NO.	PRICE EACH (Rs./Paise)
0.75	CP-59	2.50	4	CP-3	4.80
1	CP-44	2.50	6	CP-5	4.80
1.5	CP-9	2.50	10	CP-7	7.60
1.5	CP-35	2.80	16	CP-8	15.00
2.5	CP-1	2.50	50	CP-88	56.00
2.5	CP-2	2.50	70	CP-89	75.00
25	CP-86	28.00	95	CP-90	96.00
35	CP-87	37.00			



PIN TERMINAL INSULATED

mm ²	CAT. NO.	PRICE EACH (Rs./Paise)	mm ²	CAT. NO.	PRICE EACH (Rs./Paise)
0.75	CPI-60	2.80	4	CPI-20	5.80
1	CPI-45	2.80	4	CPI-21	7.60
1.5	CPI-17	2.80	6	CPI-22	8.30
1.5	CPI-40	3.10	6	CPI-23	8.80
2.5	CPI-18	2.90	10	CPI-24	9.60
2.5	CPI-19	2.90	16	CPI-25	19.00



PIN TERMINAL DOUBLE GRIP (PRE-INSULATED)

mm ²	CAT. NO.	PRICE EACH (Rs./Paise)	mm ²	CAT. NO.	PRICE EACH (Rs./Paise)
1.5	CPD-26	3.80	2.5	CPD-28	4.00
2.5	CPD-27	4.00	4	CPD-29	6.80



SNAP ON TERMINALS

mm ²	Cat No.	PRICE EACH (Rs./Paise)
1.5	SNP-8351	3.10
1.5	SND-8352	4.40
2.5	SNP-8347	3.20
2.5	SND-8348	4.80
4	SND-8476	8.40
1.5	SND-8359	5.90
1.5	SND-8362	5.90
1.5	SNP-8336	3.10
1.5	SNP-8356	3.10
1.5	SNP-8358	3.60



NON INSULATED RING TERMINALS

mm ² -E	CAT. NO.	PRICE EACH (Rs./Paise)	mm ² -E	CAT. NO.	PRICE EACH (Rs./Paise)
0.75-4	RS-7317	2.20	10-5	RS-7026	6.40
1-3.5	RS-7318	2.20	10-6	RS-7120	6.80
1.5-3	RS-7001	2.50	10-8	RS-7121	9.00
1.5-3.5	RS-7002	2.50	10-10	RS-7027	12.00
1.5-3.5	RS-7048	2.50	10-10	RS-7123	13.00
1.5-4	RS-7003	2.50	10-12	RS-7028	12.00
1.5-4	RS-7049	2.50	16-5	RS-7124	11.00
1.5-4	RS-7004	2.60	16-6	RS-7029	12.00
1.5-4	RS-7154	2.70	16-6	RS-7031	16.00
1.5-5	RS-7005	2.60	16-8	RS-7030	15.00
1.5-5	RS-7006	3.10	16-10	RS-7032	18.00
1.5-6	RS-7007	3.10	16-10	RS-7128	19.00
1.5-6	RS-7106	3.20	16-12	RS-7033	17.00
2.5-3	RS-7107	2.90	25-6	RS-7156	26.00
2.5-3.5	RS-7008	3.10	25-8	RS-7034	27.00
2.5-3.5	RS-7108	3.10	25-8	RS-7036	29.00
2.5-4	RS-7009	2.70	25-10	RS-7035	26.00
2.5-5	RS-7010	2.70	25-10	RS-7132	39.00
2.5-5	RS-7109	2.70	25-12	RS-7037	39.00
2.5-5	RS-7110	3.80	35-6	RS-7133	32.00
2.5-6	RS-7011	2.70	35-8	RS-7038	35.00
2.5-6	RS-7012	3.80	35-10	RS-7135	44.00
2.5-8	RS-7013	4.40	35-12	RS-7040	40.00
2.5-8	RS-7014	5.30	50-8	RS-7136	49.00
2.5-10	RS-7015	6.20	50-10	RS-7137	53.00
2.5-10	RS-7151	6.20	50-12	RS-7042	56.00
4.6-4	RS-7155	4.90	50-16	RS-7139	72.00
4.6-5	RS-7050	4.90	70-10	RS-7140	72.00
4.6-5	RS-7016	5.90	70-12	RS-7141	73.00
4.6-6	RS-7017	5.00	70-16	RS-7142	83.00
4.6-6	RS-7019	6.60	95-10	RS-7144	105.00
4.6-6	RS-7115	7.30	95-12	RS-7044	97.00
4.6-8	RS-7018	5.90	95-16	RS-7145	113.00
4.6-8	RS-7020	7.70	120-12	RS-7146	127.00
4.6-8	RS-7116	9.30	120-16	RS-7147	162.00
4.6-10	RS-7022	9.30	120-20	RS-7148	187.00
4.6-10	RS-7023	8.50	150-12	RS-7149	272.00
4.6-12	RS-7024	8.50	150-16	RS-7045	259.00
10-5	RS-7025	7.10	150-20	RS-7046	306.00

FORK TYPE TERMINALS



NON-INSULATED FORK TYPE

1-3	RS-7249 SPL	2.10	2.5-5	RS-7280	6.50
1.5-3.5	RS-7249	2.10	4.6-3	RS-7252	4.00
2.5-3.5	RS-7251	2.40	4.6-3.5	RS-7253	4.00

INSULATED FORK TYPE

1-3	RSI-7926 SPL	2.70	2.5-5	RSI-7929	7.50
1.5-3.5	RSI-7926	2.70	4.6-3	RSI-7930	5.20
2.5-3.5	RSI-7928	3.10	4.6-3.5	RSI-7931	5.20

PRE-INSULATED FORK TYPE

1.5-3.5	PSD-7935	3.60	4.6-3	PSD-7939	6.60
2.5-3.5	PSD-7937	4.00	4.6-3.5	PSD-7940	6.60
2.5-5	PSD-7938	9.30			



RING TERMINALS INSULATED

mm ² -E	CAT. NO.	PRICE EACH (Rs./Paise)	mm ² -E	CAT. NO.	PRICE EACH (Rs./Paise)
0.75-4	RSI-7501	2.70	2.5-5	RSI-7073	4.00
1-4	RSI-7502	2.70	2.5-5	RSI-7075	5.40
1.5-3	RSI-7054	3.70	2.5-6	RSI-7074	4.00
1.5-3.5	RSI-7055	3.70	2.5-6	RSI-7076	4.80
1.5-3.5	RSI-7058	3.90	2.5-8	RSI-7077	4.90
1.5-4	RSI-7056	3.70	2.5-8	RSI-7079	5.90
1.5-4	RSI-7059	3.90	2.5-10	RSI-7081	6.90
1.5-4	RSI-7061	2.90	4.6-4	RSI-7083	5.90
1.5-4	RSI-7063	3.70	4.6-5	RSI-7084	5.90
1.5-5	RSI-7062	2.90	4.6-5	RSI-7086	6.90
1.5-5	RSI-7065	4.60	4.6-6	RSI-7089	6.60
1.5-5	RSI-7066	4.40	4.6-6	RSI-7092	7.70
1.5-6	RSI-7067	4.60	4.6-6	RSI-7093	8.40
2.5-3	RSI-7068	3.90	4.6-8	RSI-7090	6.90
2.5-3.5	RSI-7069	3.90	4.6-8	RSI-7094	8.40
2.5-3.5	RSI-7070	4.40	4.6-8	RSI-7096	10.00
2.5-4	RSI-7071	3.80	4.6-10	RSI-7099	9.30
2.5-5	RSI-7072	3.80	4.6-12	RSI-7100	9.30



RING TERMINALS DOUBLE GRIP (PRE-INSULATED)

mm ² -E	CAT. NO.	PRICE EACH (Rs./Paise)	mm ² -E	CAT. NO.	PRICE EACH (Rs./Paise)
1.5-3	PSD-7437	4.00	4.6-5	PSD-7469	8.30
1.5-3.5	PSD-7438	4.00	4.6-6	PSD-7472	7.60
1.5-4	PSD-7439	4.00	4.6-8	PSD-7473	8.10
1.5-3.5	PSD-7441	4.00	4.6-6	PSD-7475	9.10
1.5-4	PSD-7442	4.00	4.6-6	PSD-7476	9.70
1.5-4	PSD-7444	3.90	4.6-8	PSD-7477	9.70
1.5-5	PSD-7445	3.90	4.6-8	PSD-7479	11.00
1.5-4	PSD-7446	4.50	4.6-8	PSD-7482	12.00
1.5-5	PSD-7448	4.80	4.6-12	PSD-7483	11.00
1.5-6	PSD-7449	4.80	4.6-8	PSD-8037	11.00
1.5-6	PSD-7450	5.00	4.6-9.9	PSD-8038	11.00
2.5-3	PSD-7451	4.80	2.5-4	PSD-8039	5.40
2.5-3.5	PSD-7452	4.80	4.6-8	PSD-8040	12.00
2.5-3.5	PSD-7453	4.90	4.6-5	PSD-8041	11.00
2.5-4	PSD-7454	4.10	4.6-6	PSD-8042	12.00
2.5-5	PSD-7455	4.10	4.6-13	PSD-8043	15.00
2.5-5	PSD-7456	4.10	2.5-8	PSD-8044	7.10
2.5-6	PSD-7457	4.10	4.6-4	PSD-8045	11.00
2.5-5	PSD-7458	5.90	2.5-5	PSD-8046	5.80
2.5-6	PSD-7459	5.20	2.5-6	PSD-8047	7.10
2.5-8	PSD-7460	5.90	2.5-9	PSD-8048	7.50
2.5-8	PSD-7462	6.90	2.5-4	PSD-8049	6.20
2.5-10	PSD-7464	7.70	4.6-5	PSD-8050	11.00
4.6-4	PSD-7466	7.30	4.6-5	PSD-8051	15.00
4.6-5	PSD-7467	7.30	4.6-6	PSD-8052	12.00

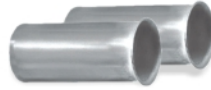
NATIONAL PRICE LIST

(25th October 2021)



**COPPER TUBULAR TERMINALS
LONG BARREL**

mm ² -E	CAT. NO.	PRICE EACH (Rs./Paise)	mm ² -E	CAT. NO.	PRICE EACH (Rs./Paise)
2.5-5	CEB-05	8.60	120-12	CEB-22	143.00
4-6	CEB-06	12.00	120-16	CEB-23	143.00
6-6	CEB-07	13.00	150-10	CEB-24	200.00
10-6	CEB-08	16.00	150-12	CEB-25	200.00
16-6	CEB-09	21.00	150-16	CEB-26	200.00
25-6	CEB-10	27.00	185-12	CEB-27	302.00
35-6	CEB-11	32.00	185-16	CEB-28	302.00
35-8	CEB-12	38.00	225-16	CEB-231	393.00
50-6	CEB-13	49.00	240-16	CEB-29	418.00
50-8	CEB-14	49.00	240-20	CEB-30	418.00
50-10	CEB-15	49.00	300-16	CEB-31	577.00
70-8	CEB-16	81.00	300-20	CEB-32	577.00
70-10	CEB-17	81.00	400-20	CEB-33	837.00
70-12	CEB-18	81.00	500-20	CEB-34	1105.00
95-10	CEB-19	105.00	630-20	CEB-35	1572.00
95-12	CEB-20	105.00	800	CEB-62	2517.00
120-10	CEB-21	143.00	1000	CEB-76	5692.00



END SEALING FERRULES

mm ² -L	CAT. NO.	PRICE EACH (Rs./Paise)	mm ² -L	CAT. NO.	PRICE EACH (Rs./Paise)
0.5-6	EH-508	0.70	6-10	EH-518	1.30
0.75-6	EH-509	0.70	6-12	EH-519	1.60
1-6	EH-510	0.70	6-15	EH-520	2.10
1-10	EH-511	0.80	10-12	EH-521	2.60
1.5-7	EH-512	0.80	10-15	EH-522	2.70
1.5-10	EH-513	0.90	10-18	EH-523	3.10
2.5-7	EH-514	0.90	16-12	EH-524	2.70
2.5-12	EH-515	1.00	16-15	EH-525	3.10
4-9	EH-516	1.00	16-18	EH-526	3.60
4-12	EH-517	1.10			



TWIN TYPE LUGS

mm ² -L	LENGTH mm	COLOUR Natural	RATE Rs/pc
0.5-8	8	WHITE	2.20
0.5-10	10	WHITE	2.40
0.75-8	8	GREY	2.20
0.75-10	10	GREY	2.20
1-8	8	RED	2.40
1-10	10	RED	2.40
1.5-8	8	BLACK	2.40
1.5-10	10	BLACK	2.40
2.5-8	8	BLUE	2.60
2.5-10	10	BLUE	2.80
4-12	12	GREY	3.30
6-12	12	YELLOW	3.30
10-14	14	RED	6.30
16-14	14	BLUE	7.30



END SEALING FERRULES (INSULATED)

mm ² -L	CAT. NO.	PRICE EACH (Rs./Paise)
0.5-8	EHI-508	1.00
0.75-8	EHI-509	1.00
1-6	EHI-510	1.10
1-10	EHI-511	1.10
1.5-10	EHI-513	1.20
2.5-8	EHI-514	1.20
2.5-12	EHI-515	1.50
4-12	EHI-517	1.90
6-12	EHI-519	2.20
10-12	EHI-521	2.80
16-15	EHI-525	4.80



COPPER DIN TYPE TERMINALS

mm ² -E	CAT. NO.	PRICE EACH (Rs./Paise)	mm ² -E	CAT. NO.	PRICE EACH (Rs./Paise)
6-5	DIN-6-5	18.00	95-16	DIN-95-16	482.00
6-6	DIN-6-6	18.00	120-10	DIN-120-10	606.00
6-8	DIN-6-8	18.00	120-12	DIN-120-12	606.00
10-5	DIN-10-5	19.00	120-14	DIN-120-14	606.00
10-6	DIN-10-6	19.00	120-16	DIN-120-16	606.00
10-8	DIN-10-8	19.00	120-20	DIN-120-20	606.00
16-6	DIN-16-6	68.00	150-10	DIN-150-10	865.00
16-8	DIN-16-8	68.00	150-12	DIN-150-12	865.00
16-10	DIN-16-10	68.00	150-14	DIN-150-14	865.00
16-12	DIN-16-12	68.00	150-16	DIN-150-16	865.00
25-6	DIN-25-6	86.00	150-20	DIN-150-20	865.00
25-8	DIN-25-8	86.00	185-10	DIN-185-10	989.00
25-10	DIN-25-10	86.00	185-12	DIN-185-12	989.00
25-12	DIN-25-12	86.00	185-14	DIN-185-14	989.00
35-6	DIN-35-6	167.00	185-16	DIN-185-16	989.00
35-8	DIN-35-8	167.00	185-20	DIN-185-20	989.00
35-10	DIN-35-10	167.00	240-12	DIN-240-12	1420.00
35-12	DIN-35-12	167.00	240-14	DIN-240-14	1420.00
35-14	DIN-35-14	167.00	240-16	DIN-240-16	1420.00
50-8	DIN-50-8	249.00	240-20	DIN-240-20	1420.00
50-10	DIN-50-10	249.00	300-14	DIN-300-14	1716.00
50-12	DIN-50-12	249.00	300-16	DIN-300-16	1716.00
50-14	DIN-50-14	249.00	300-20	DIN-300-20	1716.00
50-16	DIN-50-16	249.00	400-14	DIN-400-14	3373.00
70-8	DIN-70-8	329.00	400-16	DIN-400-16	3373.00
70-10	DIN-70-10	329.00	400-20	DIN-400-20	3373.00
70-12	DIN-70-12	329.00	500-16	DIN-500-16	3998.00
70-14	DIN-70-14	329.00	500-20	DIN-500-20	3998.00
70-16	DIN-70-16	329.00	625-16	DIN-625-16	3959.00
95-8	DIN-95-8	482.00	625-20	DIN-625-20	3959.00
95-10	DIN-95-10	482.00	800-16	DIN-800-16	7144.00
95-12	DIN-95-12	482.00	800-20	DIN-800-20	7144.00
95-14	DIN-95-14	482.00	1000-21	DIN-1000-21	9006.00



COPPER TUBE TERMINALS ICF SERIES

mm ² -E	CAT. NO.	PRICE EACH (Rs./Paise)	mm ² -E	CAT. NO.	PRICE EACH (Rs./Paise)
17-5	CUS-106	34.00	90-8	CUS-161	249.00
17-6	CUS-145	34.00	90-10	CUS-162	249.00
17-8	CUS-146	34.00	90-13	CUS-163	249.00
17-10	CUS-109	35.00	110-6	CUS-115	304.00
23-5	CUS-107	56.00	110-8	CUS-164	304.00
23-6	CUS-147	56.00	110-10	CUS-165	304.00
23-8	CUS-148	56.00	110-13	CUS-166	304.00
23-10	CUS-108	59.00	146-8	CUS-138	447.00
29-5	CUS-110	83.00	146-10	CUS-167	447.00
29-6	CUS-149	76.00	146-13	CUS-168	447.00
29-8	CUS-150	76.00	146-17	CUS-169	447.00
29-10	CUS-151	78.00	183-10	CUS-128	582.00
29-13	CUS-111	76.00	183-13	CUS-170	612.00
45-5	CUS-116	108.00	183-17	CUS-171	612.00
45-6	CUS-152	108.00	225-10	CUS-139	704.00
45-8	CUS-153	108.00	225-13	CUS-172	704.00
45-10	CUS-154	108.00	225-17	CUS-173	704.00
45-10	CUS-113	108.00	225-21	CUS-174	704.00
57-6	CUS-112	177.00	299-13	CUS-140	997.00
57-8	CUS-155	177.00	299-17	CUS-175	1010.00
57-10	CUS-156	177.00	299-21	CUS-176	997.00
57-13	CUS-157	177.00	366-13	CUS-141	1404.00
75-6	CUS-114	225.00	366-17	CUS-177	1404.00
75-8	CUS-158	225.00	366-21	CUS-178	1404.00
75-10	CUS-159	225.00	437-13	CUS-142	1925.00
75-13	CUS-160	225.00	437-17	CUS-179	1926.00
90-6	CUS-137	249.00	437-21	CUS-180	1926.00



COPPER TUBE IN-LINE CONNECTORS

mm ²	CAT. NO.	PRICE EACH (Rs./Paise)	mm ²	CAT. NO.	PRICE EACH (Rs./Paise)
1.5	EH-453	3.10	4-6	EH-455	5.10
2.5	EH-454	3.80			

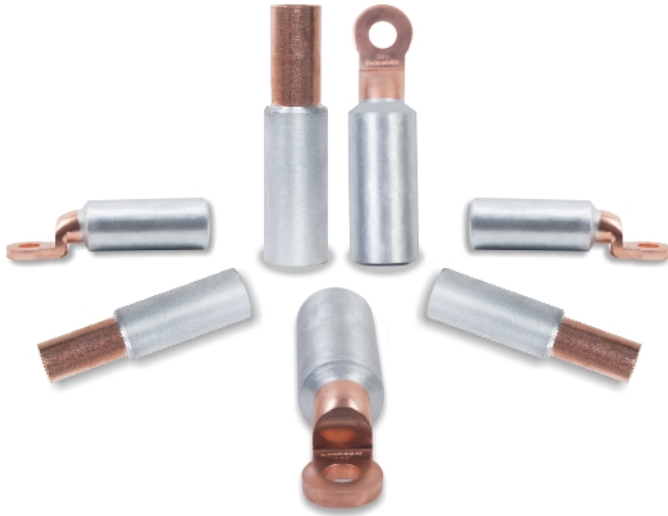


COPPER INSULATED IN-LINE CONNECTORS

mm ²	CAT. NO.	PRICE EACH (Rs./Paise)	mm ²	CAT. NO.	PRICE EACH (Rs./Paise)
1.5	EH-463	3.90	4-6	EH-465	7.30
2.5	EH-464	4.80			

PRICE ARE SUBJECT TO CHANGE WITHOUT NOTICE

BI-METALLIC SERIES



BI-METALLIC CONNECTORS (Friction Welded)

mm ²	CAT. NO.	PRICE EACH (Rs./Paise)
16-16	CACF-16-16	260.00
25-16	CACF-25-16	260.00
25-25	CACF-25-25	260.00
35-16	CACF-35-16	260.00
35-25	CACF-35-25	255.00
35-35	CACF-35-35	251.00
50-25	CACF-50-25	320.00
50-35	CACF-50-35	320.00
50-50	CACF-50-50	310.00
70-35	CACF-70-35	316.00
70-50	CACF-70-50	309.00
70-70	CACF-70-70	296.00
95-50	CACF-95-50	395.00
95-70	CACF-95-70	383.00
95-95	CACF-95-95	381.00
120-70	CACF-120-70	500.00
120-95	CACF-120-95	491.00
120-120	CACF-120-120	479.00
150-95	CACF-150-95	488.00
150-120	CACF-150-120	477.00
150-150	CACF-150-150	459.00
185-120	CACF-185-120	681.00
185-150	CACF-185-150	665.00
185-185	CACF-185-185	829.00
240-150	CACF-240-150	739.00
240-185	CACF-240-185	823.00
240-240	CACF-240-240	793.00

BI-METALLIC TERMINALS (Friction Welded)

mm ²	CAT. NO.	PRICE EACH (Rs./Paise)
25	CAF-25-10	208.00
35	CAF-35-10	228.00
50	CAF-50-13	261.00
70	CAF-70-13	306.00
95	CAF-95-13	312.00
120	CAF-120-13	357.00
150	CAF-150-13	394.00
185	CAF-185-13	662.00
240	CAF-240-13	678.00
300	CAF-300-17	853.00
400	CAF-400-17	872.00
500	CAF-500	2270.00
630	CAF-630	2643.00

ALUMINIUM ALLOY TUBULAR BIMETALLIC TERMINALS

mm ² - E	CAT. NO.	PRICE EACH (Rs./Paise)	mm ² - E	CAT. NO.	PRICE EACH (Rs./Paise)
10-6	BL-1	4.50	120-12	BL-16	39.00
10-8	BL-2	4.90	150-12	BL-17	54.00
16-6	BL-3	6.30	150-16	BL-18	54.00
16-8	BL-4	6.30	185-12	BL-19	68.00
25-8	BL-5	8.20	185-16	BL-20	68.00
25-10	BL-6	8.20	225-12	BL-21	95.00
35-8	BL-7	9.50	240-12	BL-22	115.00
35-10	BL-8	9.50	240-16	BL-23	115.00
50-8	BL-9	17.00	300-16	BL-24	184.00
50-10	BL-10	17.00	300-20	BL-25	184.00
70-10	BL-11	26.00	400-20	BL-26	231.00
70-12	BL-12	26.00	500-20	BL-27	332.00
95-10	BL-13	27.00	630-20	BL-28	433.00
95-12	BL-14	27.00	800-20	BL-29	651.00
120-10	BL-15	39.00	1000-20	BL-30	1066.00

NATIONAL PRICE LIST

(25th October 2021)



DOUBLE COMPRESSION ARMOURED WEATHER AND FLAME PROOF BRASS CABLE GLANDS



SUITABLE OVER ALL DIAMETER	NIPPLE ET THREAD	WEATHER PROOF			FLAME PROOF		
		DOWELL'S CAT. NO.	PRICE EACH (Rs./Paise)	BOX PKG.	DOWELL'S CAT. NO.	PRICE EACH (Rs./Paise)	BOX PKG.
6.0 - 12.0	3/4"	DBW - 01SS	209.00	56	DBF - 01SS	271.00	50
12.0 - 16.5	3/4"	DBW - 01S	241.00	50	DBF - 01S	291.00	40
16.5 - 18.5	3/4"	DBW - 01	270.00	36	DBF - 01	321.00	24
16.5 - 18.5	1"	DBW - 01A	308.00	30	DBF - 01A	365.00	30
18.5 - 20.0	1"	DBW - 02	345.00	20	DBF - 02	422.00	20
18.5 - 20.0	3/4"	DBW - 02A	357.00	20	DBF - 02A	445.00	20
20.0 - 23.0	1"	DBW - 03	366.00	20	DBF - 03	478.00	20
23.0 - 26.0	1"	DBW - 04	478.00	12	DBF - 04	607.00	12
23.0 - 26.0	1.1/4"	DBW - 04A	538.00	12	DBF - 04A	680.00	12
26.0 - 30.0	1.1/4"	DBW - 05	599.00	12	DBF - 05	706.00	12
26.0 - 30.0	1.1/2"	DBW - 05A	718.00	12	DBF - 05A	820.00	12
30.0 - 33.0	1.1/2"	DBW - 06	862.00	10	DBF - 06	1011.00	8
30.0 - 33.0	1.1/4"	DBW - 06A	890.00	8	DBF - 06A	1057.00	8
33.0 - 37.0	1.1/2"	DBW - 07	1006.00	6	DBF - 07	1136.00	6
37.0 - 41.0	2"	DBW - 08	1292.00	6	DBF - 08	1408.00	6
41.0 - 46.0	2"	DBW - 09	1426.00	5	DBF - 09	1628.00	5
46.0 - 52.0	2"	DBW - 010	1565.00	4	DBF - 010	1833.00	4
46.0 - 52.0	2.1/2"	DBW - 010A	1911.00	3	DBF - 010A	2083.00	3
52.0 - 54.0	2.1/2"	DBW - 011A	2323.00	2	DBF - 011A	2794.00	2
54.0 - 61.0	2.1/2"	DBW - 011	2330.00	2	DBF - 011	2560.00	2
61.0 - 66.0	3"	DBW - 012	2845.00	2	DBF - 012	3090.00	2
66.0 - 72.0	3"	DBW - 013A	3564.00	1	DBF - 013A	4338.00	1
72.0 - 78.0	3.1/4"	DBW - 013	4023.00	1	DBF - 013	4870.00	1
78.0 - 84.0	3.1/2"	DBW - 014	4827.00	1	DBF - 014	5172.00	1
84.0 - 94.0	4"	DBW - 015	6465.00	1	DBF - 015	7038.00	1
94.0 - 104.0	4.1/2"	DBW - 016	8332.00	1	DBF - 016	9051.00	1

NOTE :

- Price are subjected to change without prior notice.
- Applicable G.S.T will be charge extra - This price list supersedes all our earlier price list.
- HSN Code - 85389000
- Cable Glands are Duly Nickel Plated as per standard.
- For Chrome / Tin / or any other plating, shall be charge extra as applicable.
- Subjected to Mumbai Jurisdiction.

PRICE ARE SUBJECT TO CHANGE WITHOUT NOTICE

DOUBLE COMPRESSION UN-ARMOURED BRASS CABLE GLANDS



Sr. No.	DOWELL'S CAT. NO.	PRICE EACH (Rs./Paise)	BOX PKG.
1	DBW - 01SS (UN)	222.00	50
2	DBW - 01S (UN)	243.00	50
3	DBW - 01A (UN)	295.00	30
4	DBW - 02 (UN)	376.00	20
5	DBW - 03 SP (UN)	402.00	20
6	DBW - 04A (UN)	570.00	12
7	DBW - 05A (UN)	625.00	12
8	DBW - 06 SP (UN)	874.00	10
9	DBW - 07 SP (UN)	1007.00	6
10	DBW - 08 (UN)	1264.00	6
11	DBW - 09 (UN)	1497.00	5
12	DBW - 010A (UN)	1845.00	3
13	DBW - 011SP (UN)	2439.00	2
14	DBW - 012 (UN)	2865.00	2
15	DBW - 013 (UN)	3634.00	1
16	DBW - 014 (UN)	4431.00	1
17	DBW - 015 (UN)	6648.00	1

NOTE :

- Price are subjected to change without prior notice.
- Applicable G.S.T will be charge extra - This price list supersedes all our earlier price list.
- HSN Code - 85389000
- Cable Glands are Duly Nickel Plated as per standard.
- For Chrome / Tin / or any other plating, shall be charge extra as applicable.
- Subjected to Mumbai Jurisdiction.

NATIONAL PRICE LIST

(25th October 2021)



SINGLE COMPRESSION AND SIBG BRASS CABLE GLANDS



SINGLE COMPRESSION GLANDS					SIBG SERIES		
DOWELL'S CAT. NO.		ORACLE CODE	PRICE EACH (Rs./Paise)	BOX PKG.	DOWELL'S CAT. NO.	PRICE EACH (Rs./Paise)	BOX PKG.
INCH	MM						
3/8"	10	DGP10001	62.00	64	1616	108.00	70
1/2"	12	DGP10002	62.00	128	1619	112.00	50
5/8"	16	DGP10003	62.00	135	2119	181.00	40
3/4"	19	DGP10004	69.00	105	2125	165.00	40
7/8"	22	DGP10005	85.00	84	2925	220.00	24
1"	25	DGP10006	123.00	60	2932	254.00	20
1.1/8"	28	DGP10007	152.00	30	2938	262.00	20
1.1/4"	32	DGP10008	205.00	24	3638	380.00	10
1.3/8"	35	DGP10009	256.00	24	4251	661.00	5
1.1/2"	38	DGP10010	302.00	16	5451	753.00	4
1.3/4"	45	DGP10011	366.00	12	5463	783.00	4
2"	50	DGP10012	448.00	10	6063	1149.00	4
2.1/4"	57	DGP10013	575.00	6	6675	1393.00	3
2.1/2"	63	DGP10014	666.00	5	7882	2010.00	3
2.3/4"	70	DGP10015	977.00	5			
3"	75	DGP10016	1149.00	4			
3.1/4"	82	DGP10017	1221.00	3			
3.1/2"	88	DGP10018	1611.00	3			
4"	100	DGP10019	1912.00	3			
4.1/2"	112	DGP10020	3045.00	2			

NOTE :

- Price are subjected to change without prior notice.
- Applicable G.S.T will be charge extra - This price list supersedes all our earlier price list.
- HSN Code - 85389000
- Cable Glands are Duly Nickel Plated as per standard.
- For Chrome / Tin / or any other plating, shall be charge extra as applicable.
- Subjected to Mumbai Jurisdiction.

PRICE ARE SUBJECT TO CHANGE WITHOUT NOTICE

EARTH TAGS & SHROUDS



FOR GLAND SIZE	EARTH TAG		LSF / LSZH SHROUD	
	DOWELL'S CAT. NO.	PRICE EACH (Rs./Paise)	SHROUD SIZE / CODE	PRICE EACH (Rs./Paise)
DBW - 01SS/DBF - 01SS	DET-20	47.00	2023	32.00
DBW - 01S/DBF - 01S	DET-20	47.00	2026	40.00
DBW - 01/DBF - 01	DET-20	47.00	2030	41.00
DBW - 01A/DBF - 01A	DET-25	49.00	2030	41.00
DBW - 02/DBF - 02	DET-25	49.00	2533	50.00
DBW - 02A/DBF - 02A	DET-20	47.00	2533	50.00
DBW - 03/DBF - 03	DET-25	49.00	2535	50.00
DBW - 04/DBF - 04	DET-25	49.00	4000	101.00
DBW - 04A/DBF - 04A	DET-32	86.00	4000	101.00
DBW - 05/DBF - 05	DET-32	86.00	3246	87.00
DBW - 05A/DBF - 05A	DET-40	95.00	3246	87.00
DBW - 06/DBF - 06	DET-40	95.00	3251	85.00
DBW - 06A/DBF - 06A	DET-32	86.00	3251	85.00
DBW - 07/DBF - 07	DET-40	95.00	4053	101.00
DBW - 08/DBF - 08	DET-50	127.00	5063	150.00
DBW - 09/DBF - 09	DET-50	127.00	5068	164.00
DBW - 010/DBF - 010	DET-50	127.00	6371	256.00
DBW - 010A/DBF - 010A	DET-63	162.00	6371	256.00
DBW - 011A/DBF - 011A	DET-63	162.00	6388	284.00
DBW - 011/DBF - 011	DET-63	162.00	6388	284.00
DBW - 012/DBF - 012	DET-75	226.00	7595	293.00
DBW - 013A/DBF - 013A	DET-75	226.00	7595	293.00
DBW - 013/DBF - 013	DET-82	244.00	7595	293.00
DBW - 014/DBF - 014	DET-90	271.00		
DBW - 015/DBF - 015	DET-100	381.00		
DBW - 016/DBF - 016	DET-110	404.00		

NOTE :

- Price are subjected to change without prior notice.
- Applicable G.S.T will be charge extra - This price list supersedes all our earlier price list.
- Applicable HSN Code for Earth tag is 85389000
- Applicable HSN Code for Shroud is 85472000
- Earth tags are with screw
- Subjected to Mumbai Jurisdiction.

NATIONAL PRICE LIST

(25th October 2021)



NYLON / BRASS PG GLANDS & FLANGE TYPE GLANDS



NYLON PG GLAND		
SUITABLE OVER ALL DIAMETER	DOWELL'S CATALOGUE NO.	PRICE EACH (Rs./Paise)
3.5 - 6	PG - 7	21.00
4 - 8	PG - 9	26.00
5 - 10	PG - 11	35.00
6 - 12	PG - 13.5	44.00
10 - 14	PG - 16	52.00
13 - 18	PG - 21	69.00
18 - 25	PG - 29	108.00
22 - 32	PG - 36	172.00
30 - 38	PG - 42	216.00
34 - 44	PG - 48	259.00

FLANGE TYPE CABLE GLANDS			
SUITABLE OVER ALL DIAMETER	DOWELL'S CATALOGUE NO.	ORACALE CODE	PRICE EACH (Rs./Paise)
12.0 - 16.0	DOWELLS - 5	DGP10021	127.00
16.1 - 18.0	DOWELLS - 4	DGP10022	144.00
18.1 - 21.0	DOWELLS - 3	DGP10023	156.00
21.1 - 25.0	DOWELLS - 2	DGP10024	193.00
25.1 - 29.0	DOWELLS - 1	DGP10025	224.00
29.1 - 33.0	DOWELLS - 11	DGP10026	280.00
33.1 - 35.0	DOWELLS - 0	DGP10027	347.00
35.1 - 38.0	DOWELLS - 00	DGP10028	396.00
38.1 - 41.0	DOWELLS - 38	DGP10029	393.00
41.1 - 45.0	DOWELLS - 001	DGP10030	500.00
45.1 - 52.0	DOWELLS - 002	DGP10031	571.00
52.1 - 59.0	DOWELLS - 003	DGP10032	620.00
59.1 - 67.0	DOWELLS - 0033	DGP10033	750.00
67.1 - 76.0	DOWELLS - 004	DGP10034	1000.00

BRASS PG GLAND		
SUITABLE OVER ALL DIAMETER	DOWELL'S CATALOGUE NO.	PRICE EACH (Rs./Paise)
2 - 5	MPG - 7	72.00
3 - 8	MPG - 9	93.00
4 - 10	MPG - 11	115.00
5 - 12	MPG - 13.5	150.00
8 - 14	MPG - 16	158.00
12 - 17	MPG - 21	265.00
16 - 25	MPG - 29	534.00
20 - 32	MPG - 36	589.00
28 - 37	MPG - 42	1163.00
32 - 40	MPG - 48	1221.00

NOTE :

- Price are subjected to change without prior notice.
- Applicable G.S.T will be charge extra - This price list supersedes all our earlier price list.
- Applicable HSN Code for Brass PG gland and Flange type gland is 85389000
- Applicable HSN Code for Nylon PG gland is 85359000
- Subjected to Mumbai Jurisdiction.

PRICE ARE SUBJECT TO CHANGE WITHOUT NOTICE

DC TYPE MEDIUM DUTY ARMoured BRASS CABLE GLANDS



SUITABLE OVER ALL DIAMETER	CATALOG NO.	ORACLE CODE	Nipple (inch)	Rate Per Piece (Rs. Ps.)	Inner Packing (Nos.)
07.0 - 14.0	DC - 3/8"	DGP10036	5/8"	162.00	64
14.1 - 15.5	DC - 1/2"	DGP10037	5/8"	194.00	50
15.6 - 17.0	DC - 5/8"	DGP10038	3/4"	200.00	46
17.1 - 18.5	DC - 3/4"	DGP10039	3/4"	231.00	28
18.6 - 19.5	DC - 7/8"	DGP10040	3/4"	278.00	24
19.6 - 22.5	DC - 1"	DGP10041	1"	309.00	20
22.6 - 25.5	DC - 1.1/8"	DGP10042	1.1/8"	396.00	15
25.6 - 31.5	DC - 1.1/4"	DGP10043	1.1/4"	521.00	12
31.6 - 34.5	DC - 1.3/8"	DGP10044	1.1/2"	623.00	12
34.6 - 36.5	DC - 1.1/2"	DGP10045	1.1/2"	734.00	8
36.6 - 44.5	DC - 1.3/4"	DGP10046	2"	1010.00	5
44.6 - 49.5	DC - 2"	DGP10047	2"	1158.00	5
49.6 - 54.5	DC - 2.1/4"	DGP10048	2.1/4"	1351.00	4
54.6 - 63.5	DC - 2.1/2"	DGP10049	2.1/2"	1858.00	2
63.6 - 69.5	DC - 2.3/4"	DGP10050	2.3/4"	2099.00	2
69.6 - 74.5	DC - 3"	DGP10051	3"	2583.00	2
74.6 - 81.0	DC - 3.1/4"	DGP10052	3.1/4"	2992.00	1
81.1 - 86.0	DC - 3.1/2"	DGP10053	3.1/2"	3903.00	1
86.1 - 100.0	DC - 4"	DGP10054	4"	5301.00	1

NOTE :

- Price are subjected to change with out prior notice.
- Applicable Taxes, Duties will be charge extra.
- Subjected to Mumbai Jurisdiction.

NATIONAL PRICE LIST

(25th October 2021)



Smart Crimping System

SYT - 17
(Non-Insulated)



Capacity : * 1.5 mm² - 6 mm² **Rs. 1,073/-**

SYA - 427



Capacity : 1.5mm² to 10mm²
Special Features : Non-insulated terminations with inter locking, arrangement and releasing system. **Rs. 1,173/-**

SYT - 2



Capacity : 0.5mm² to 16mm²
Special Features : Non-Insulated terminations with inter locking arrangement and releasing system. **Rs. 1,364/-**

SYT - 185
(12 set of ring dies)



Capacity : 10mm² to 185mm²
Special Features : Changeable ring types of dies from R1 to R13. **Rs. 8,532/-**

SYG - 2622 - 0.75 mm²
SYG - 2216 - 1.5 mm²
SYH - 1614 - 2.5 mm²
(Insulated/ Pre-Insulated)



Rs. 1,867/-

SYT - 400



Capacity : 25mm² to 400mm²
Special Features : Hand operated crimping system with hexagonal dies. **Rs. 15,406/-**

SYI - 1210 / SYO - 1210
(Insulated/ Pre- Insulated)



Capacity : 4mm² - 6mm² **Rs. 3,174/-**

SYT - 9
(Dieless)



Capacity : 6mm² to 50mm²
Special Features : Manual dieless (HEX-profile) rotating range for aluminium terminations. **Rs. 3,015/-**

SYB - 95 (R-1 to R-10)
(R-8 Die is not available)
(9 Set Ring Dies)



Capacity : 10mm² to 95mm² **Rs. 8,777/-**

SYT - 50
(Dieless)



Capacity : 16mm² to 50mm²
Special Features : Hand operated crimping tool **Rs. 4,183/-**

SYB - 9502 (R-1 to R-13)
(R-8 Die is not available)
(12 Set Ring Dies)



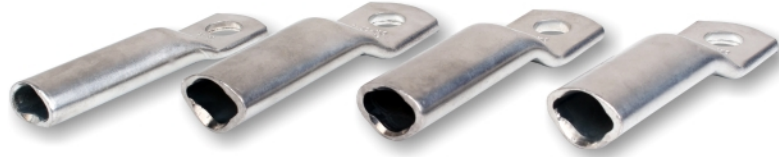
Capacity : 10mm² to 185mm² **Rs. 12,162/-**

SYT - 7



Capacity : 25mm² to 400mm²
Special Features : Gearpowered Changeable Regular hex dies with interlocking releasing system **Rs. 19,664/-**

PRICE ARE SUBJECT TO CHANGE WITHOUT NOTICE



SIZE (Sq. mm)	E - BOLT HOLE	DOWELL'S CATALOGUE NO.				PRICE EACH (Rs./Paise)	STD PKG.
		2 CORE	3 CORE	3.5 CORE	4 CORE		
25	8.4	CUS-2001	CUS-3001	CUS-3501	CUS-4001	53.00	25
25	10.5	CUS-2002	CUS-3002	CUS-3502	CUS-4002	53.00	25
25	13	CUS-2003	CUS-3003	CUS-3503	CUS-4003	53.00	25
35	8.4	CUS-2004	CUS-3004	CUS-3504	CUS-4004	84.00	25
35	10.5	CUS-2005	CUS-3005	CUS-3505	CUS-4005	84.00	25
50	8.4	CUS-2006	CUS-3006	CUS-3506	CUS-4006	120.00	25
50	10.5	CUS-2007	CUS-3007	CUS-3507	CUS-4007	120.00	25
50	13	CUS-2008	CUS-3008	CUS-3508	CUS-4008	120.00	25
70	8.4	CUS-2009	CUS-3009	CUS-3509	CUS-4009	193.00	15
70	10.5	CUS-2010	CUS-3010	CUS-3510	CUS-4010	193.00	15
70	13	CUS-2011	CUS-3011	CUS-3511	CUS-4011	193.00	15
95	10.5	CUS-2012	CUS-3012	CUS-3512	CUS-4012	239.00	10
95	13	CUS-2013	CUS-3013	CUS-3513	CUS-4013	239.00	10
95	17	CUS-2014	CUS-3014	CUS-3514	CUS-4014	239.00	10
120	10.5	CUS-2015	CUS-3015	CUS-3515	CUS-4015	329.00	10
120	13	CUS-2016	CUS-3016	CUS-3516	CUS-4016	329.00	10
120	17	CUS-2017	CUS-3017	CUS-3517	CUS-4017	329.00	10
150	10.5	CUS-2018	CUS-3018	CUS-3518	CUS-4018	418.00	15
150	13	CUS-2019	CUS-3019	CUS-3519	CUS-4019	418.00	15
150	17	CUS-2020	CUS-3020	CUS-3520	CUS-4020	418.00	15
185	10.5	CUS-2021	CUS-3021	CUS-3521	CUS-4021	524.00	10
185	13	CUS-2022	CUS-3022	CUS-3522	CUS-4022	524.00	10
185	17	CUS-2023	CUS-3023	CUS-3523	CUS-4023	524.00	10
240	13	CUS-2024	CUS-3024	CUS-3524	CUS-4024	801.00	10
240	17	CUS-2025	CUS-3025	CUS-3525	CUS-4025	801.00	10
300	17	CUS-2026	CUS-3026	CUS-3526	CUS-4026	1002.00	10
300	20.3	CUS-2027	CUS-3027	CUS-3527	CUS-4027	1002.00	10
400	20.3	CUS-2028	CUS-3028	CUS-3528	CUS-4028	1418.00	8
500	21	CUS-2029	CUS-3029	CUS-3529	CUS-4029	1667.00	5
630	21	CUS-2030	CUS-3030	CUS-3530	CUS-4030	2502.00	5

Smart Crimping System

<p>SYD - 20 A (R 11 to R-16)</p> <p>Rs. 32,182/-</p> <p>Capacity : 10mm² to 300mm² Special Features : Hand operated hydraulic changeable ring dies forming dies, W-type, D- type, P- type, T- type, H/RH- type dies also available extra</p> 	<p>SYE - 150C (R 11 to R-16)</p> <p>Rs. 50,942/-</p> <p>Capacity : 10mm² to 1000mm² Special Features : Hand operated hydraulic changeable ring dies forming dies, W-type, D- type, P- type, T- type, H/RH- type dies also available extra</p> 
<p>SYD - 20 B (8 Set of Hex Dies)</p> <p>Rs. 39,527/-</p> <p>Capacity : 50mm² to 400mm² Special Features : Hand operated hydraulic changeable Changeable hexagonal dies</p> 	<p>SYT - 102 R (Foot Operated) (11 set of Hex Dies)</p> <p>Rs. 49,368/-</p> <p>Capacity : 50mm² to 630mm² Special Features : Easy carry light weight crimping modified head with foot operated hydraulic pump. flip Head (Hexagonal Dies)</p> 
<p>SYD - 20 C (R- 11 to R-16)</p> <p>Rs. 41,043/-</p> <p>Capacity : 10mm² to 300mm² Special Features : Hand operated hydraulic tool with trolley arrangement</p> 	<p>SYT - 53 M (End sealing terminal)</p> <p>Capacity : 10mm² to 35mm² Special Features : For End Sealing Ferrules Insulated & Non- Insulated</p>  <p>Rs. 2,927/-</p>
<p>SYE - 150A (R11 to R18)</p> <p>Rs. 52,295/-</p> <p>Capacity : 10mm² to 1000mm² Special Features : Hand operated hydraulic crimping system with 8 set of ring dies</p> 	<p>SYT - 6-6 (End sealing ferrules)</p> <p>Capacity : 0.25mm² to 6mm² Special Features : Self adjusting Crimping tools For end sealing ferrules</p>  <p>Rs. 4,269/-</p>
<p>SYE - 150B (10 set of Hex Dies)</p> <p>Rs. 57,717/-</p> <p>Capacity : 10mm² to 1000mm² Special Features : Hand operated hydraulic tools 120mm² to 1000mm² cable with 10 to 95 dies shall be charges extra.</p> 	<p>SYT - 120 - Rs. 2,235/- (Cutter) SYT - 240 - Rs. 3,369/- (Cutter) SYT - 500 - Rs. 5,776/- (Cutter)</p> <p>Capacity : 120mm² to 240mm² to 500mm² Special Features : Mechanical cable cutter for cutting copper & aluminium cable</p> 

NATIONAL PRICE LIST

(25th October 2021)



Smart Crimping System

SYT-106
(with hexagonal dies)



Capacity : 16mm² to 300mm²

Special Features : Hand operated hydraulic crimping tool

Rs. 11,506/-

Jack SYT - 102 R (HY- 282) Portable Jack
Crimping Capacity
up to 630mm²



SYT - 102 R - Rs. 27,401/-
(Without dies)

SYT-52M
(For end sealing ferrules)



Capacity : 0.5mm² to 6mm²

Special Features : Insulated terminations with inter locking arrangement and releasing system.

Rs. 2,152/-

Jack SYE - 150 A (SPE-1709)
Crimping Capacity
up to 1000mm²



SYE - 150 A - Rs. 31,016/-
(Without dies)

SYT-1546
(Insulated)



Capacity : 1.5mm² to 4.6mm²

Special Features : Insulated terminations with inter locking arrangement and releasing system.

Rs. 2,152/-

Jack SYE - 150 B (Portable) (SPE - 1713)
Crimping Capacity
up to 1000mm²



SYE - 150 B - Rs. 44,075/-
(Without dies)

Jack SYD - 20 A (SPD - 2034)
Crimping Capacity
up to 300mm²



SYD - 20 A - Rs. 26,104/-
(Without dies)

SYB-9502 H
(RH-1 to RH-13 Hex Dies)



Capacity : 10mm² to 185mm²

Rs. 12,763/-

Jack SYD - 20 B (Portable Jack) (SPD - 2036)
Crimping Capacity
up to 400mm²



SYD - 20 B - Rs. 24,486/-
(Without dies)

Smart Crimping System

SPE- 1711
Hand Operated Hydraulic Pump
(Max. Pressure 10000 P.S.I.)



Rs. 8,904/-

SPE- 1712
Foot Operated Hydraulic Pump
(Max. Pressure 10000 P.S.I.)



Rs. 11,236/-

Jack Hose Pipe
Std 2meters SPE - 1607



Rs. 2,544/-

SYT - 117
Electrically Operated Power Pack



Capacity :
Max pressure 700 Bar
Special Features : Electrically Operated Pump
Electric Motor : 2HP
Tank Capacity : 25 Ltr.
Oil : Hydraulic Oil No. 68

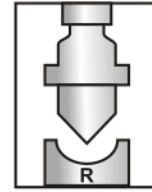
Rs. 1,98,803/-

JIG FOR SYB -95/9502
RING DIES



R-1, R-2, R-3, R-4, R-5, R-6, R-7,
R-9, R-10, R-11, **Rs. 344/- Each**

JIG FOR PUNCH TYPE
RING DIES



R-12, R-13,
Rs. 421/- Each

CRIMPING JIG FOR
SYT-185 (Plier Type)

JR-1, JR-2, JR-3, JR-4, JR-5, JR-6
JR-7, JR-9, JR-10, JR-11, JR-12, JR-13



Rs. 414/- Each

CRIMPING JIG FOR
SYT-7 (Hex Profile)
(Mechanical gear Power)

JRH-25, JRH-35, JRH-50, JRH-70, JRH-95
JRH-120, JRH-150, JRH-185, JRH-240, JRH-300, JRH-400, **Rs. 1,086/- Each**



JIG FOR SYT-102 R
(Hex Profile)

(Foot operated Hydraulic Crimping Tool)
JEM 267 (50mm²) JEM 272 (185mm²)
JEM 268 (70mm²) JEM 273 (240mm²)
JEM 269 (95mm²) JEM 274 (300mm²)
JEM 270 (120mm²) JEM 275 (400mm²)
JEM 271 (150mm²)



Rs. 2,043/- Each

JIG FOR SYT-400
Hex Profile (Plier Type)

J-25, J-35, J-50, J-70, J-95, J-120,
J-150, J-185, J-240, J-300, J-400



Rs. 812/- Each

CRIMPING JIGS FOR
SYD-20 A TOOL



SYD-20 B TOOL

JDR-11, JDR-12, JDR-13,
JDR-14, JDR-15,
Rs. 1,384/- Each

JDA-50, JDA-150
JDA-70 JDA-240
JDA-95 JDA-300
JDA-120 JDA-400

Rs. 1,581/- Each

JDR-16



Rs. 2,371/- Each

CRIMPING JIGS FOR
SYE-150 A TOOLS



SYE-150 B

Rs. 3,954/- Each

ADOPTER BLOCK FOR TOOLS
TO USE SYE-150, SYB-95, SYD-20

R-4, R-5, R-6, R-7, R-9, R-10

Rs. 1,977/- Each

R-11, R-12, R-13, R-14,

Rs. 2,175/- Each

R-15, R-16, R-17, R-18,

Rs. 2,372/- Each

R-19, R-20, R-21, R-22,

Rs. 2,605/- Each

R-23, R-27, R-29

Rs. 2,605/- Each

JEA-10, JEA-16, JEA-25, JEA-35

Rs. 1,878/- Each

JEA-50, JEA-70, JEA-95, JEA-120,

Rs. 2,668/- Each

JEA-150

JEA-185, JEA-240, JEA-300, JEA-400

Rs. 3,736/- Each

JEA-500, JEA-600, JEA-800, JEA-1000

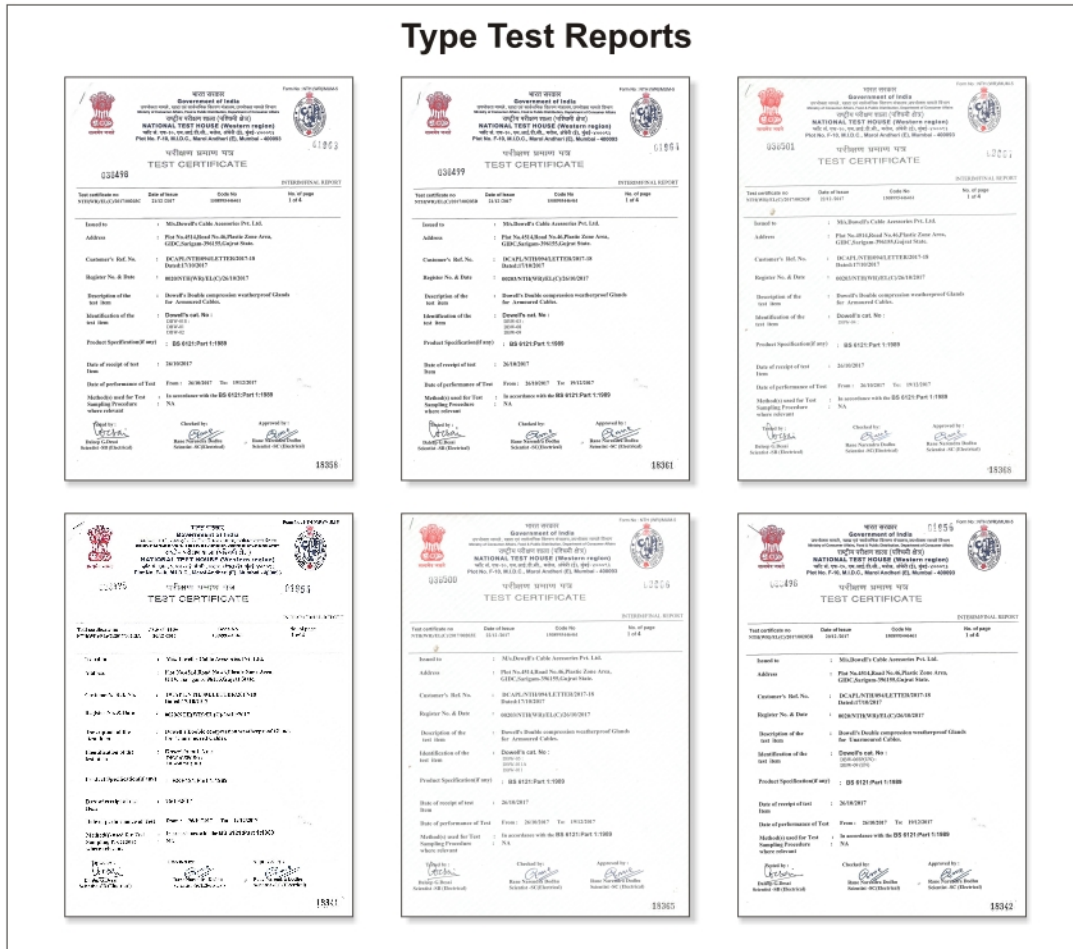
Rs. 5,059/- Each

NATIONAL PRICE LIST

(25th October 2021)



Type Test Reports



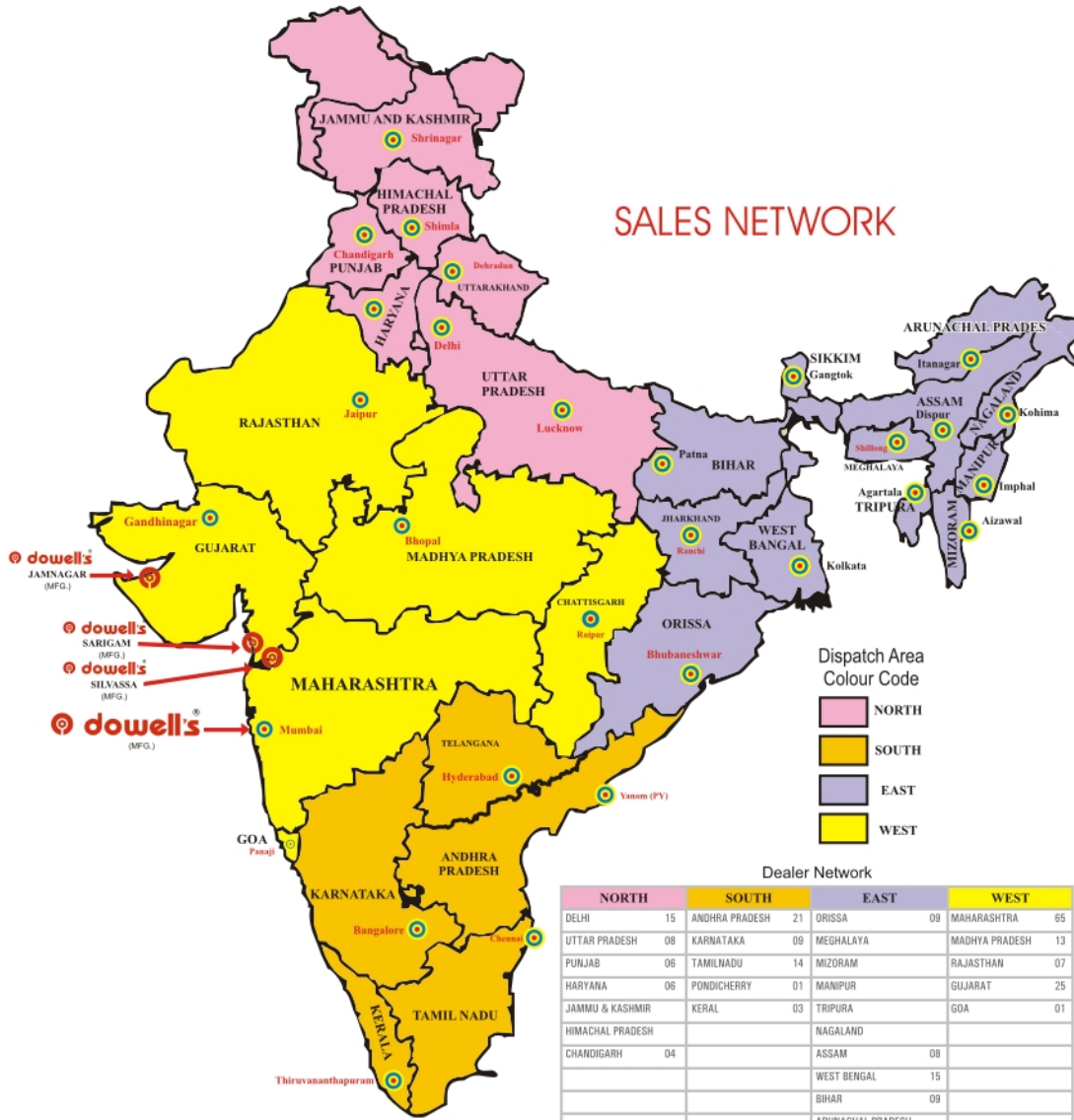
NOTE:

1. PRICES ARE SUBJECT TO CHANGE WITHOUT PRIOR NOTICE.
2. APPLICABLE GST WILL BE CHARGE EXTRA-THIS PRICE LIST SUPERSEDES ALL OUR EARLIER PRICE LIST
3. SUBJECTED TO MUMBAI JURISDICTION

PRODUCTS	HSN CODE
COPPER AND ALUMINIUM TERMINALS & CONNECTORS	85369090
HAND TOOLS & SPARES	82032000
HYDRAULIC TOOLS & SPARES	84679900
CORROSION INHABITING COMPOUND	38119000
BRASS GLANDS / EARTH TAG	85389000
POLYIMIDE GLANDS	85359000
SHROUDS	85472000

PRICE ARE SUBJECT TO CHANGE WITHOUT NOTICE

SALES NETWORK



TOTAL NO. OF DEALERS - 239



DOWELL'S CABLE ACCESSORIES PVT. LTD.

Work Place : Unit UH - 7, Reg. Survey No. 81/P2, Shed C, Baska-Rameshara Road, Village : Vanseti,

Tal. : Halol, Dist. : Panchmahal, Gujarat - 389 350. India

Website : www.dowellscableaccessories.com

Authorised Dealer

NATIONAL PRICE LIST

(25th October 2021)



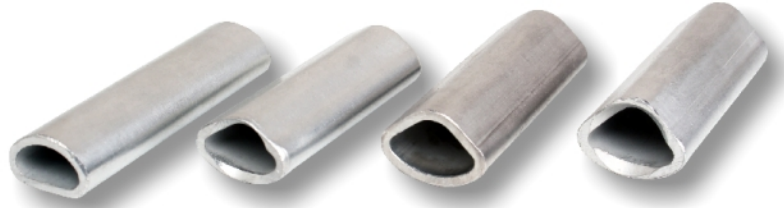
COPPER SECTOR LUGS - SHORT BARREL



SIZE (Sq. mm)	E - BOLT HOLE	DOWELL'S CATALOGUE NO.				PRICE EACH (Rs./Paice)	STD PKG.
		2 CORE	3 CORE	3.5 CORE	4 CORE		
25	8.4	CUS-2101	CUS-3101	CUS-3601	CUS-4101	37.00	25
25	10.5	CUS-2102	CUS-3102	CUS-3602	CUS-4102	37.00	25
25	13	CUS-2103	CUS-3103	CUS-3603	CUS-4103	37.00	25
35	8.4	CUS-2104	CUS-3104	CUS-3604	CUS-4104	54.00	25
35	10.5	CUS-2105	CUS-3105	CUS-3605	CUS-4105	54.00	25
50	8.4	CUS-2106	CUS-3106	CUS-3606	CUS-4106	84.00	25
50	10.5	CUS-2107	CUS-3107	CUS-3607	CUS-4107	84.00	25
50	13	CUS-2108	CUS-3108	CUS-3608	CUS-4108	84.00	25
70	8.4	CUS-2109	CUS-3109	CUS-3609	CUS-4109	133.00	15
70	10.5	CUS-2110	CUS-3110	CUS-3610	CUS-4110	133.00	15
70	13	CUS-2111	CUS-3111	CUS-3611	CUS-4111	133.00	15
95	10.5	CUS-2112	CUS-3112	CUS-3612	CUS-4112	164.00	10
95	13	CUS-2113	CUS-3113	CUS-3613	CUS-4113	164.00	10
95	17	CUS-2114	CUS-3114	CUS-3614	CUS-4114	164.00	10
120	10.5	CUS-2115	CUS-3115	CUS-3615	CUS-4115	245.00	10
120	13	CUS-2116	CUS-3116	CUS-3616	CUS-4116	245.00	10
120	17	CUS-2117	CUS-3117	CUS-3617	CUS-4117	245.00	10
150	10.5	CUS-2118	CUS-3118	CUS-3618	CUS-4118	308.00	15
150	13	CUS-2119	CUS-3119	CUS-3619	CUS-4119	308.00	15
150	17	CUS-2120	CUS-3120	CUS-3620	CUS-4120	308.00	15
185	10.5	CUS-2121	CUS-3121	CUS-3621	CUS-4121	396.00	10
185	13	CUS-2122	CUS-3122	CUS-3622	CUS-4122	396.00	10
185	17	CUS-2123	CUS-3123	CUS-3623	CUS-4123	396.00	10
240	13	CUS-2124	CUS-3124	CUS-3624	CUS-4124	624.00	10
240	17	CUS-2125	CUS-3125	CUS-3625	CUS-4125	624.00	10
300	17	CUS-2126	CUS-3126	CUS-3626	CUS-4126	800.00	10
300	20.3	CUS-2127	CUS-3127	CUS-3627	CUS-4127	800.00	10
400	20.3	CUS-2128	CUS-3128	CUS-3628	CUS-4128	1186.00	8
500	21	CUS-2129	CUS-3129	CUS-3629	CUS-4129	1376.00	5
630	21	CUS-2130	CUS-3130	CUS-3630	CUS-4130	2064.00	5

PRICE ARE SUBJECT TO CHANGE WITHOUT NOTICE

COPPER SECTOR CONNECTORS



SIZE (Sq. mm)	DOWELL'S CATALOGUE NO.				PRICE EACH (Rs./Paise)	STD PKG.
	2 CORE	3 CORE	3.5 CORE	4 CORE		
25	2S-CB-25	3S-CB-25	3.5S-CB-25	4S-CB-25	25.00	50
35	2S-CB-35	3S-CB-35	3.5S-CB-35	4S-CB-35	39.00	50
50	2S-CB-50	3S-CB-50	3.5S-CB-50	4S-CB-50	64.00	50
70	2S-CB-70	3S-CB-70	3.5S-CB-70	4S-CB-70	109.00	50
95	2S-CB-95	3S-CB-95	3.5S-CB-95	4S-CB-95	161.00	25
120	2S-CB-120	3S-CB-120	3.5S-CB-120	4S-CB-120	221.00	20
150	2S-CB-150	3S-CB-150	3.5S-CB-150	4S-CB-150	297.00	25
185	2S-CB-185	3S-CB-185	3.5S-CB-185	4S-CB-185	393.00	25
240	2S-CB-240	3S-CB-240	3.5S-CB-240	4S-CB-240	610.00	20
300	2S-CB-300	3S-CB-300	3.5S-CB-300	4S-CB-300	848.00	10
400	2S-CB-400	3S-CB-400	3.5S-CB-400	4S-CB-400	1301.00	8
500	2S-CB-500	3S-CB-500	3.5S-CB-500	4S-CB-500	1491.00	5
630	2S-CB-630	3S-CB-630	3.5S-CB-630	4S-CB-630	2044.00	5

NATIONAL PRICE LIST

(25th October 2021)



ALUMINIUM SECTOR LUGS - LONG BARREL



SIZE (Sq. mm)	E - BOLT HOLE	DOWELL'S CATALOGUE NO.				PRICE EACH (Rs./Paise)	STD PKG.
		2 CORE	3 CORE	3.5 CORE	4 CORE		
25	8.4	2S-ALS-518	3S-ALS-518	3.5S-ALS-518	4S-ALS-518	7.80	50
25	10.5	2S-ALS-519	3S-ALS-519	3.5S-ALS-519	4S-ALS-519	7.80	50
25	13	2S-ALS-520	3S-ALS-520	3.5S-ALS-520	4S-ALS-520	7.80	50
35	8.4	2S-ALS-521	3S-ALS-521	3.5S-ALS-521	4S-ALS-521	12.00	50
35	10.5	2S-ALS-522	3S-ALS-522	3.5S-ALS-522	4S-ALS-522	12.00	50
50	8.4	2S-ALS-655	3S-ALS-655	3.5S-ALS-655	4S-ALS-655	18.00	50
50	10.5	2S-ALS-512	3S-ALS-512	3.5S-ALS-512	4S-ALS-512	18.00	50
50	13	2S-ALS-524	3S-ALS-524	3.5S-ALS-524	4S-ALS-524	18.00	50
70	8.4	2S-ALS-556	3S-ALS-556	3.5S-ALS-556	4S-ALS-556	27.00	30
70	10.5	2S-ALS-525	3S-ALS-525	3.5S-ALS-525	4S-ALS-525	27.00	30
70	13	2S-ALS-526	3S-ALS-526	3.5S-ALS-526	4S-ALS-526	27.00	30
95	10.5	2S-ALS-527	3S-ALS-527	3.5S-ALS-527	4S-ALS-527	32.00	20
95	13	2S-ALS-528	3S-ALS-528	3.5S-ALS-528	4S-ALS-528	32.00	20
95	17	2S-ALS-529	3S-ALS-529	3.5S-ALS-529	4S-ALS-529	32.00	20
120	10.5	2S-ALS-557	3S-ALS-557	3.5S-ALS-557	4S-ALS-557	45.00	20
120	13	2S-ALS-530	3S-ALS-530	3.5S-ALS-530	4S-ALS-530	45.00	20
120	17	2S-ALS-531	3S-ALS-531	3.5S-ALS-531	4S-ALS-531	45.00	20
150	10.5	2S-ALS-658	3S-ALS-658	3.5S-ALS-658	4S-ALS-658	57.00	25
150	13	2S-ALS-532	3S-ALS-532	3.5S-ALS-532	4S-ALS-532	57.00	25
150	17	2S-ALS-533	3S-ALS-533	3.5S-ALS-533	4S-ALS-533	57.00	25
185	10.5	2S-ALS-511	3S-ALS-511	3.5S-ALS-511	4S-ALS-511	72.00	20
185	13	2S-ALS-534	3S-ALS-534	3.5S-ALS-534	4S-ALS-534	72.00	20
185	17	2S-ALS-535	3S-ALS-535	3.5S-ALS-535	4S-ALS-535	72.00	20
240	13	2S-ALS-536	3S-ALS-536	3.5S-ALS-536	4S-ALS-536	110.00	15
240	17	2S-ALS-537	3S-ALS-537	3.5S-ALS-537	4S-ALS-537	110.00	15
300	17	2S-ALS-500	3S-ALS-500	3.5S-ALS-500	4S-ALS-500	137.00	10
300	20.3	2S-ALS-559	3S-ALS-559	3.5S-ALS-559	4S-ALS-559	137.00	10
400	20.3	2S-ALS-560	3S-ALS-560	3.5S-ALS-560	4S-ALS-560	194.00	8
500	20.3	2S-ALS-596	3S-ALS-596	3.5S-ALS-596	4S-ALS-596	304.00	5
630	20.3	2S-ALS-561	3S-ALS-561	3.5S-ALS-561	4S-ALS-561	398.00	5

PRICE ARE SUBJECT TO CHANGE WITHOUT NOTICE

ALUMINIUM SECTOR LUGS - SHORT BARREL



SIZE (Sq. mm)	E - BOLT HOLE	DOWELL'S CATALOGUE NO.				PRICE EACH (Rs./Paise)	STD PKG.
		2 CORE	3 CORE	3.5 CORE	4 CORE		
25	8.4	2S-ALS-218	3S-ALS-218	3.5S-ALS-218	4S-ALS-218	5.60	50
25	10.5	2S-ALS-219	3S-ALS-219	3.5S-ALS-219	4S-ALS-219	5.60	50
25	13	2S-ALS-220	3S-ALS-220	3.5S-ALS-220	4S-ALS-220	5.60	50
35	8.4	2S-ALS-221	3S-ALS-221	3.5S-ALS-221	4S-ALS-221	7.80	50
35	10.5	2S-ALS-222	3S-ALS-222	3.5S-ALS-222	4S-ALS-222	7.80	50
50	8.4	2S-ALS-255	3S-ALS-255	3.5S-ALS-255	4S-ALS-255	12.00	50
50	10.5	2S-ALS-312	3S-ALS-312	3.5S-ALS-312	4S-ALS-312	12.00	50
50	13	2S-ALS-224	3S-ALS-224	3.5S-ALS-224	4S-ALS-224	12.00	50
70	8.4	2S-ALS-256	3S-ALS-256	3.5S-ALS-256	4S-ALS-256	19.00	30
70	10.5	2S-ALS-225	3S-ALS-225	3.5S-ALS-225	4S-ALS-225	19.00	30
70	13	2S-ALS-226	3S-ALS-226	3.5S-ALS-226	4S-ALS-226	19.00	30
95	10.5	2S-ALS-227	3S-ALS-227	3.5S-ALS-227	4S-ALS-227	24.00	20
95	13	2S-ALS-228	3S-ALS-228	3.5S-ALS-228	4S-ALS-228	24.00	20
95	17	2S-ALS-229	3S-ALS-229	3.5S-ALS-229	4S-ALS-229	24.00	20
120	10.5	2S-ALS-257	3S-ALS-257	3.5S-ALS-257	4S-ALS-257	35.00	20
120	13	2S-ALS-230	3S-ALS-230	3.5S-ALS-230	4S-ALS-230	35.00	20
120	17	2S-ALS-231	3S-ALS-231	3.5S-ALS-231	4S-ALS-231	35.00	20
150	10.5	2S-ALS-258	3S-ALS-258	3.5S-ALS-258	4S-ALS-258	44.00	25
150	13	2S-ALS-232	3S-ALS-232	3.5S-ALS-232	4S-ALS-232	44.00	25
150	17	2S-ALS-233	3S-ALS-233	3.5S-ALS-233	4S-ALS-233	44.00	25
185	10.5	2S-ALS-311	3S-ALS-311	3.5S-ALS-311	4S-ALS-311	56.00	20
185	13	2S-ALS-234	3S-ALS-234	3.5S-ALS-234	4S-ALS-234	56.00	20
185	17	2S-ALS-235	3S-ALS-235	3.5S-ALS-235	4S-ALS-235	56.00	20
240	13	2S-ALS-236	3S-ALS-236	3.5S-ALS-236	4S-ALS-236	88.00	15
240	17	2S-ALS-237	3S-ALS-237	3.5S-ALS-237	4S-ALS-237	88.00	15
300	17	2S-ALS-300	3S-ALS-300	3.5S-ALS-300	4S-ALS-300	112.00	10
300	20.3	2S-ALS-259	3S-ALS-259	3.5S-ALS-259	4S-ALS-259	112.00	10
400	20.3	2S-ALS-260	3S-ALS-260	3.5S-ALS-260	4S-ALS-260	167.00	8
500	20.3	2S-ALS-296	3S-ALS-296	3.5S-ALS-296	4S-ALS-296	251.00	5
630	20.3	2S-ALS-261	3S-ALS-261	3.5S-ALS-261	4S-ALS-261	336.00	5

NATIONAL PRICE LIST

(25th October 2021)



ALUMINIUM SECTOR CONNECTORS



SIZE (Sq. mm)	DOWELL'S CATALOGUE NO.				PRICE EACH (Rs./Paise)	STD PKG.
	2 CORE	3 CORE	3.5 CORE	4 CORE		
25	2S-ALS-1	3S-ALS-1	3.5S-ALS-1	4S-ALS-1	4.50	100
35	2S-ALS-2	3S-ALS-2	3.5S-ALS-2	4S-ALS-2	6.70	100
50	2S-ALS-3	3S-ALS-3	3.5S-ALS-3	4S-ALS-3	11.00	100
70	2S-ALS-4	3S-ALS-4	3.5S-ALS-4	4S-ALS-4	19.00	100
95	2S-ALS-5	3S-ALS-5	3.5S-ALS-5	4S-ALS-5	28.00	50
120	2S-ALS-6	3S-ALS-6	3.5S-ALS-6	4S-ALS-6	39.00	35
150	2S-ALS-7	3S-ALS-7	3.5S-ALS-7	4S-ALS-7	53.00	50
185	2S-ALS-8	3S-ALS-8	3.5S-ALS-8	4S-ALS-8	69.00	40
240	2S-ALS-9	3S-ALS-9	3.5S-ALS-9	4S-ALS-9	109.00	20
300	2S-ALS-10	3S-ALS-10	3.5S-ALS-10	4S-ALS-10	150.00	15
400	2S-ALS-11	3S-ALS-11	3.5S-ALS-11	4S-ALS-11	231.00	10
500	2S-ALS-19	3S-ALS-19	3.5S-ALS-19	4S-ALS-19	224.00	5
630	2S-ALS-20	3S-ALS-20	3.5S-ALS-20	4S-ALS-20	297.00	5

COPPER SERIES



COPPER TUBE TERMINAL MEDIUM DUTY

mm ² -E	CAT. NO.	PRICE EACH (Rs./Paise)	mm ² -E	CAT. NO.	PRICE EACH (Rs./Paise)
2.5-5	CUS-05	5.80	120-12	CUS-22	115.00
4-6	CUS-06	8.20	120-16	CUS-23	115.00
6-6	CUS-07	9.00	150-10	CUS-24	164.00
10-6	CUS-08	11.00	150-12	CUS-25	164.00
16-6	CUS-09	15.00	150-16	CUS-26	164.00
25-6	CUS-10	25.00	185-12	CUS-27	242.00
35-6	CUS-11	27.00	185-16	CUS-28	242.00
35-8	CUS-12	27.00	225-16	CUS-231	300.00
50-6	CUS-13	36.00	240-16	CUS-29	339.00
50-8	CUS-14	36.00	240-20	CUS-30	339.00
50-10	CUS-15	36.00	300-16	CUS-31	488.00
70-8	CUS-16	63.00	300-20	CUS-32	488.00
70-10	CUS-17	63.00	400-20	CUS-33	672.00
70-12	CUS-18	63.00	500-20	CUS-34	881.00
95-10	CUS-19	86.00	630-20	CUS-35	1236.00
95-12	CUS-20	86.00	800	CUS-62	2121.00
120-10	CUS-21	115.00	1000	CUS-76	4585.00



COPPER TUBE TERMINAL HEAVY DUTY LONG BARREL

mm ² -E	CAT. NO.	PRICE EACH (Rs./Paise)	mm ² -E	CAT. NO.	PRICE EACH (Rs./Paise)
25-8	CUS-282	29.00	185-12	CUS-289	476.00
35-8	CUS-283	46.00	240-16	CUS-290	668.00
50-8	CUS-284	77.00	300-16	CUS-291	853.00
70-10	CUS-285	119.00	400-20	CUS-292	1317.00
95-12	CUS-286	186.00	500-21	CUS-293	2313.00
120-12	CUS-287	267.00	630-21	CUS-294	3180.00
150-12	CUS-288	328.00			



COPPER TERMINAL EXTENDED PALM (BLANK)

mm ²	CAT. NO.	PRICE EACH (Rs./Paise)	mm ²	CAT. NO.	PRICE EACH (Rs./Paise)
50	CUS-466	99.00	240	CUS-472	811.00
70	CUS-467	164.00	300	CUS-473	1174.00
95	CUS-468	235.00	400	CUS-474	2033.00
120	CUS-469	282.00	500	CUS-475	2439.00
150	CUS-470	370.00	630	CUS-476	3758.00
185	CUS-471	550.00			



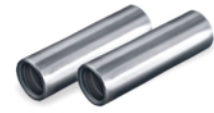
COPPER TUBE TERMINAL HEAVY DUTY BS-4579

mm ² -E	CAT. NO.	PRICE EACH (Rs./Paise)	mm ² -E	CAT. NO.	PRICE EACH (Rs./Paise)
1.5-5	CUS-538	7.20	50-10	CUS-556	57.00
1.5-6	CUS-539	7.50	70-10	CUS-358	93.00
2.5-4	CUS-388	7.50	70-8	CUS-557	93.00
2.5-5	CUS-540	7.80	70-13	CUS-559	93.00
2.5-6	CUS-541	7.80	95-10	CUS-359	132.00
4-5	CUS-389	9.10	95-13	CUS-561	132.00
4-6	CUS-543	9.10	120-17	CUS-546	180.00
6-5	CUS-390	11.00	120-13	CUS-241	180.00
6-6	CUS-544	11.00	150-13	CUS-242	234.00
6-8	CUS-545	11.00	150-17	CUS-564	217.00
10-6	CUS-353	12.00	185-17	CUS-243	308.00
10-8	CUS-547	13.00	240-17	CUS-244	455.00
16-8	CUS-549	17.00	240-21	CUS-567	455.00
16-6	CUS-354	16.00	300-17	CUS-245	664.00
20-8	CUS-550	18.00	300-21	CUS-569	664.00
25-6	CUS-355	26.00	400-17	CUS-246	1044.00
25-8	CUS-551	26.00	400-21	CUS-571	1044.00
25-10	CUS-552	26.00	500-21	CUS-247	1425.00
35-8	CUS-356	35.00	550-21	CUS-573	1745.00
35-6	CUS-542	35.00	630-21	CUS-248	2138.00
35-10	CUS-554	36.00	800	CUS-599	3564.00
50-8	CUS-357	57.00	1000	CUS-590	4994.00



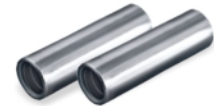
COPPER REDUCER TERMINALS

mm ²	CAT. NO.	PRICE EACH (Rs./Paise)	mm ²	CAT. NO.	PRICE EACH (Rs./Paise)
2.5	WPC-1	18.00	95	WPC-29	170.00
2.5	WPC-7	17.00	95	WPC-8	239.00
4	WPC-15	18.00	95	WPC-31	157.00
4	WPC-16	17.00	95	WPC-32	251.00
6	WPC-17	19.00	120	WPC-33	207.00
6	WPC-18	17.00	120	WPC-34	206.00
10	WPC-19	22.00	120	WPC-35	239.00
10	WPC-20	20.00	120	WPC-36	321.00
10	WPC-21	26.00	150	WPC-10	376.00
10	WPC-22	24.00	150	WPC-37	292.00
16	WPC-23	45.00	185	WPC-30	479.00
16	WPC-24	45.00	185	WPC-38	383.00
16	WPC-2	32.00	225	WPC-39	628.00
25	WPC-25	52.00	225	WPC-46	865.00
25	WPC-3	69.00	225	WPC-42	799.00
35	WPC-4	68.00	240	WPC-44	823.00
50	WPC-26	76.00	240	WPC-43	601.00
50	WPC-5	174.00	300	WPC-45	762.00
70	WPC-27	118.00	300	WPC-47	814.00
70	WPC-6	180.00	400	WPC-101	1723.00
70	WPC-28	177.00			



COPPER TUBE HEAVY DUTY IN-LINE CONNECTORS

mm ²	CAT. NO.	PRICE EACH (Rs./Paise)	mm ²	CAT. NO.	PRICE EACH (Rs./Paise)
1.5	EH-453	3.10	150	CB-30	239.00
1.5	CB-41	4.90	150	CB-54	207.00
2.5	EH-454	3.80	185	CB-55	284.00
4	CB-3	5.40	185	CB-31	327.00
4.6	EH-455	6.30	240	CB-32	502.00
6	CB-4	7.20	240	CB-56	436.00
10	EH-460	9.90	300	CB-33	713.00
16	CB-6	11.00	300	CB-57	620.00
20	CB-47	13.00	400	CB-34	1214.00
25	CB-24	27.00	400	CB-58	913.00
35	CB-25	37.00	500	CB-35	1626.00
50	CB-26	56.00	500	CB-59	1335.00
70	CB-27	108.00	550	CB-60	1450.00
70	CB-51	94.00	630	CB-36	2317.00
95	CB-28	151.00	630	CB-61	1897.00
95	CB-52	123.00	800	CB-42	3329.00
120	CB-29	195.00	1000	CB-43	4954.00
120	CB-53	146.00			



COPPER TUBE LIGHT DUTY IN-LINE CONNECTORS

mm ²	CAT. NO.	PRICE EACH (Rs./Paise)	mm ²	CAT. NO.	PRICE EACH (Rs./Paise)
2.5	CB-23	5.30	225	CB-20	339.00
25	CB-7	27.00	240	CB-15	354.00
35	CB-8	36.00	300	CB-16	536.00
50	CB-9	54.00	400	CB-17	813.00
70	CB-10	78.00	500	CB-18	1055.00
95	CB-11	110.00	630	CB-19	1453.00
120	CB-12	152.00	800	CB-21	2275.00
150	CB-13	195.00	1000	CB-22	3388.00
185	CB-14	245.00			

PRICE ARE SUBJECT TO CHANGE WITHOUT NOTICE

NATIONAL PRICE LIST

(25th October 2021)



ALUMINIUM SERIES



ALUMINIUM TUBE TERMINALS

mm ² -E	CAT. NO.	PRICE EACH (Rs./Paise)	mm ² -E	CAT. NO.	PRICE EACH (Rs./Paise)
2.5-3	ALS-151	2.40	70-12	ALS-226	19.00
2.5-3.5	ALS-309	2.40	95-10	ALS-227	20.00
4-4	ALS-155	2.50	95-12	ALS-228	20.00
4-5	ALS-317	2.50	95-16	ALS-229	20.00
6-5	ALS-158	2.80	120-10	ALS-257	28.00
6-6	ALS-313	2.80	120-12	ALS-230	28.00
10-4	ALS-159	3.50	120-16	ALS-231	28.00
10-6	ALS-214	3.50	150-10	ALS-258	37.00
10-8	ALS-215	3.50	150-12	ALS-232	37.00
16-6	ALS-252	4.90	150-16	ALS-233	37.00
16-8	ALS-216	4.90	185-10	ALS-311	46.00
16-10	ALS-217	4.90	185-12	ALS-234	46.00
25-6	ALS-253	6.80	185-16	ALS-235	46.00
25-8	ALS-218	6.80	225-12	ALS-320	65.00
25-10	ALS-219	6.80	240-12	ALS-236	78.00
25-12	ALS-220	6.80	240-16	ALS-237	78.00
35-6	ALS-254	8.20	300-16	ALS-300	111.00
35-8	ALS-221	8.20	300-20	ALS-259	111.00
35-10	ALS-222	8.20	400-20	ALS-260	160.00
50-8	ALS-255	12.00	500-20	ALS-296	244.00
50-10	ALS-312	12.00	630-20	ALS-261	310.00
50-12	ALS-224	12.00	800	ALS-318	502.00
70-8	ALS-256	19.00	1000	ALS-319	731.00
70-10	ALS-225	19.00			



ALUMINIUM IN LINE CONNECTORS

mm ²	CAT. NO.	PRICE EACH (Rs./Paise)	mm ²	CAT. NO.	PRICE EACH (Rs./Paise)
2.5	ALS-145	1.90	120	ALS-9	27.00
2.5	ALS-6	1.90	150	ALS-10	31.00
4	ALS-5	2.10	185	ALS-11	40.00
6	ALS-13	2.10	225	ALS-147	62.00
10	ALS-14	2.50	240	ALS-16	64.00
10	ALS-146	2.40	300	ALS-17	95.00
16	ALS-4	3.20	400	ALS-18	143.00
25	ALS-3	5.40	500	ALS-19	231.00
35	ALS-2	5.40	630	ALS-20	273.00
50	ALS-12	9.50	800	ALS-148	379.00
70	ALS-1	15.00	1000	ALS-149	664.00
95	ALS-15	18.00			



ALUMINIUM REDUCER TERMINALS

mm ²	CAT. NO.	PRICE EACH (Rs./Paise)	mm ²	CAT. NO.	PRICE EACH (Rs./Paise)
2.5	AWP-1	8.20	70	AWP-28	75.00
2.5	AWP-7	8.20	95	AWP-29	71.00
4	AWP-15	8.20	95	AWP-8	100.00
4	AWP-16	7.60	95	AWP-31	65.00
6	AWP-17	8.50	95	AWP-32	105.00
6	AWP-18	7.60	120	AWP-33	86.00
10	AWP-19	9.30	120	AWP-34	86.00
10	AWP-20	9.30	120	AWP-35	100.00
10	AWP-21	9.30	120	AWP-36	134.00
10	AWP-22	9.30	150	AWP-10	157.00
16	AWP-23	19.00	150	AWP-37	122.00
16	AWP-24	19.00	185	AWP-30	200.00
16	AWP-2	13.00	185	AWP-38	160.00
25	AWP-25	21.00	225	AWP-39	262.00
25	AWP-3	27.00	225	AWP-46	377.00
35	AWP-4	28.00	225	AWP-42	334.00
50	AWP-26	32.00	240	AWP-44	343.00
50	AWP-5	54.00	240	AWP-43	251.00
70	AWP-27	49.00	300	AWP-45	317.00
70	AWP-6	63.00	300	AWP-47	340.00



ALUMINIUM TUBE TERMINALS LONG BARREL

mm ² -E	CAT. NO.	PRICE EACH (Rs./Paise)	mm ² -E	CAT. NO.	PRICE EACH (Rs./Paise)
2.5-3	ALS-551	3.50	95-10	ALS-527	25.00
2.5-3.5	ALS-509	3.50	95-12	ALS-528	25.00
4-4	ALS-555	3.50	95-16	ALS-529	25.00
4-5	ALS-517	3.50	120-10	ALS-557	37.00
6-5	ALS-558	3.80	120-12	ALS-530	37.00
6-6	ALS-513	3.80	120-16	ALS-531	37.00
10-6	ALS-514	4.60	150-10	ALS-658	45.00
10-8	ALS-515	4.60	150-12	ALS-532	45.00
16-6	ALS-552	5.90	150-16	ALS-533	45.00
16-8	ALS-516	5.90	185-10	ALS-511	57.00
16-10	ALS-617	5.90	185-12	ALS-534	57.00
25-8	ALS-518	6.80	185-16	ALS-535	57.00
25-10	ALS-519	6.80	225-12	ALS-620	78.00
25-12	ALS-520	6.80	240-12	ALS-536	95.00
35-8	ALS-521	9.50	240-16	ALS-537	95.00
35-10	ALS-522	9.50	300-16	ALS-500	139.00
50-8	ALS-655	15.00	300-20	ALS-559	139.00
50-10	ALS-512	15.00	400-20	ALS-560	194.00
50-12	ALS-524	15.00	500-20	ALS-596	307.00
70-8	ALS-556	24.00	630-20	ALS-561	402.00
70-10	ALS-525	24.00	800	ALS-618	604.00
70-12	ALS-526	24.00	1000	ALS-619	875.00



ALUMINIUM TERMINALS FOR AL.XLPE CONDUCTORS

mm ²	CAT. NO.	PRICE EACH (Rs./Paise)	mm ²	CAT. NO.	PRICE EACH (Rs./Paise)
25-8	ALS-XL17	9.50	225-12	ALS-XL25	132.00
35-8	ALS-XL18	13.00	240-12	ALS-XL26	148.00
50-10	ALS-XL19	21.00	300-20	ALS-XL27	193.00
70-10	ALS-XL20	28.00	400-20	ALS-XL28	307.00
95-12	ALS-XL21	44.00	500-20	ALS-XL29	428.00
120-12	ALS-XL22	56.00	630-20	ALS-XL30	612.00
150-12	ALS-XL23	81.00	800-20	ALS-XL31	827.00
185-12	ALS-XL24	106.00	1000-20	ALS-XL32	1762.00



ALUMINIUM IN LINE CONNECTORS FOR AL.XLPE CONDUCTORS

mm ²	CAT. NO.	PRICE EACH (Rs./Paise)	mm ²	CAT. NO.	PRICE EACH (Rs./Paise)
25	ALS-XL1	8.20	225	ALS-XL9	120.00
35	ALS-XL2	12.00	240	ALS-XL10	140.00
50	ALS-XL3	20.00	300	ALS-XL11	181.00
70	ALS-XL4	28.00	400	ALS-XL12	279.00
95	ALS-XL5	39.00	500	ALS-XL13	364.00
120	ALS-XL6	50.00	630	ALS-XL14	503.00
150	ALS-XL7	66.00	800	ALS-XL15	689.00
185	ALS-XL8	99.00	1000	ALS-XL16	949.00



ALUMINIUM TUBE TERMINALS TWO HOLES

mm ² -E	CAT. NO.	PRICE EACH (Rs./Paise)	mm ² -E	CAT. NO.	PRICE EACH (Rs./Paise)
150	ALS-701	90.00	630	ALS-706	652.00
240	ALS-702	160.00	300	ALS-704	246.00
300	ALS-703	246.00	300	ALS-705	270.00

CORROSION INHIBITING COMPOUND



GTZ - 8785 Rs. 63.00/-